



GSP RESOURCE CORP.



GSP'S ALWIN MINE PROJECT

HIGHLAND VALLEY COPPER MINE

DISCLAIMER

This presentation has been prepared by GSP Resource Corp. ("GSPR") using its best efforts to realistically and factually present the information contained. However, subjective opinion, dependence upon factors outside GSPR's control and outside information sources unavoidably dictate that GSPR cannot warrant the information contained to be exhaustive, complete or sufficient. In addition, many factors can effect the presentation which could significantly alter the results intended by GSPR, rendering the presentation unattainable or substantially altered. Therefore, interested uses should conduct their own assessment and consult with their own professional advisors prior to making any investment decisions.

This presentation does not constitute a prospectus or public offering for financing, and no guarantees are made or implied with regard to the success of GSPR proposed ventures. Interested investors are advised to seek advice from the investment advisors.

Some of the statements in this document may be deemed to be "forward-looking statements". Forward-looking statements address future events and conditions and are necessarily based upon a number of estimates and assumptions. These statements relate to analyses and other information that are based on forecasts of future results, estimates of amounts not yet determinable and assumptions of management. Any statements that express or involve discussions with respect to predictions, expectations, beliefs, plans, projections, objectives, assumptions or future events or performance (often, but not always, using words or phrases such as "expects" or "does not expect", "is expected", "anticipates" or "does not anticipate", "plans", "estimates" or "intends", or stating that certain actions, events or results "may", "could", "would", "might" or "will" be taken, occur or be achieved), and variations of such words, and similar expressions are not statements of historical fact and may be forward-looking statements. Forward-looking statement are necessarily based upon a number of factors that, if untrue, could cause the actual results, performances or achievements of the Company to be materially different from future results, performances or achievements express or implied by such statements. Such statements and information are based on numerous assumptions regarding present and future business strategies and the environment in which the Company will operate in the future, including the price of metals, anticipated costs and the ability to achieve goals, that general business and economic conditions will not change in a material adverse manner, that financing will be available if and when needed and on reasonable terms, and that third party contractors, equipment and supplies and governmental and other approvals required to conduct the Company's planned exploration activities will be available on reasonable terms and in a timely manner. While such estimates and assumptions are considered reasonable by the management of the Company, they are inherently subject to significant business, economic, competitive and regulatory uncertainties and risks. Mineralization hosted on nearby properties is not necessarily indicative of mineralization that may be hosted on the Alwin property.

Forward-looking statements are subject to a variety of risks and uncertainties, which could cause actual events, level of activity, performance or results to differ materially from those reflected in the forward-looking statements, including, without limitation: (i) risks related to gold, copper and other commodity price fluctuations; (ii) risks and uncertainties relating to the interpretation of exploration results; (iii) risks related to the inherent uncertainty of exploration and cost estimates and the potential for unexpected costs and expenses; (iv) that resource exploration and development is a speculative business; (v) that the Company may lose or abandon its property interests or may fail to receive necessary licenses and permits; (vi) that environmental laws and regulations may become more onerous; (vii) that the Company may not be able to raise additional funds when necessary; (viii) the possibility that future exploration, development or mining results will not be consistent with the Company's expectations; (ix) exploration and development risks, including risks related to accidents, equipment breakdowns, labor disputes or other unanticipated difficulties with or interruptions in exploration and development; (x) competition; (xi) the potential for delays in exploration or development activities or the completion of geologic reports or studies; (xii) the uncertainty of profitability based upon the Company's history of losses; (xiii) risks related to environmental regulation and liability; (xiv) risks associated with failure to maintain community acceptance, agreements and permissions (generally referred to as "social license"), including local First Nations; (xv) risks relating to obtaining and maintaining all necessary government permits, approvals and authorizations relating to the continued exploration and development of the Company's projects; (xvi) risks related to the outcome of legal actions; (xvii) political and regulatory risks associated with mining and exploration; (xix) risks related to current global financial conditions; and (xx) other risks and uncertainties related to the Company's prospects, properties and business strategy. These risks, as well as others, could cause actual results and events to vary significantly. There can be no assurance that economic resources will be discovered or developed at the Alwin or Olivine Properties and mineralization hosted on nearby properties is not necessarily indicative of mineralization that may be hosted on the Alwin property or the Olivine property. Accordingly, actual results may differ materially from those currently anticipated in such statements. Factors that could cause actual results to differ materially from those in forward looking statements include, but are not limited to, continued availability of capital and financing and general economic, market or business conditions, the loss of key directors, employees, advisors or consultants, adverse weather conditions, equipment failures, failure of counterparties to perform their contractual obligations and fees charged by service providers. Investors are cautioned that forward-looking statements are not guarantees of future performance or events and, accordingly are cautioned not to put undue reliance on forward-looking statements due to the inherent uncertainty of such statements.

For further information visit www.sedar.com and the Company's website.

The Scientific and Technical information provided herein has been reviewed and approved on behalf of the Company by Christopher Dyakowski, P.Geo., who is a Qualified Person under National Instrument 43-101.



GSP RESOURCE CORP.



ADVANCING EXPLORATION

GSP Resource Corp. (TSXV: **GSPR**) is a Southwestern British Columbia focused metals exploration & development company.

GSPR's management group has a strong track record of creating shareholder value through developing and financing venture-stage natural resource opportunities.

The company holds an option to acquire 100% of the Alwin Mine Copper-Gold-Silver Project, located in the Kamloops Mining Division, 18 km west of Logan Lake, British Columbia. The Alwin Mine Project includes the past-producing Alwin Copper Mine and is located immediately west of **Teck Resources'** (TSX:**TECK.B**) Highland Valley porphyry copper-molybdenum-silver ore body.

The Alwin Mine Project location is in the Guichon Batholith, within three kilometers of Teck Resources' Highland Valley Copper open pit.

The Company also holds an option to acquire 100% of the Olivine Mountain project located in The Tulameen ultramafic complex.



INVESTMENT HIGHLIGHTS

Experienced Leadership

Management has extensive experience across critical functions of successful resource deals:

- Deal Structuring
- Sourcing and Acquisition of Assets
- Exploration and Development of Assets
- Capital Raising
- Legal & Regulatory
- Marketing and Promotion

Superior Capital Structure

- Management & Insiders Hold ~30% of I/O Shares (4.2 million)
- All pre-IPO privately issued shares were Voluntary pooled above and beyond TSXV policy to demonstrate long-term commitment of Management and Shareholders to create Value;
- **Free trading float of only 6.3 million shares;** provides existing and new shareholders with strong potential re-rating leverage as corporate development milestones are achieved

Southwestern BC focus: The Alwin Mine

- January 2020: Obtained option to acquire 100% of the past-producing Alwin Mine Copper-Gold-Silver Mine
- Spring-Summer 2020: Data compilation, 3D modelling of Alwin Deposit, generating expansion drill targets, permitting for Summer-Fall 2020 Drill program
- Summer-Fall 2020: Drill program focused on expansion targets as well as drilling to support re-interpretation of the historic Alwin Mine deposit



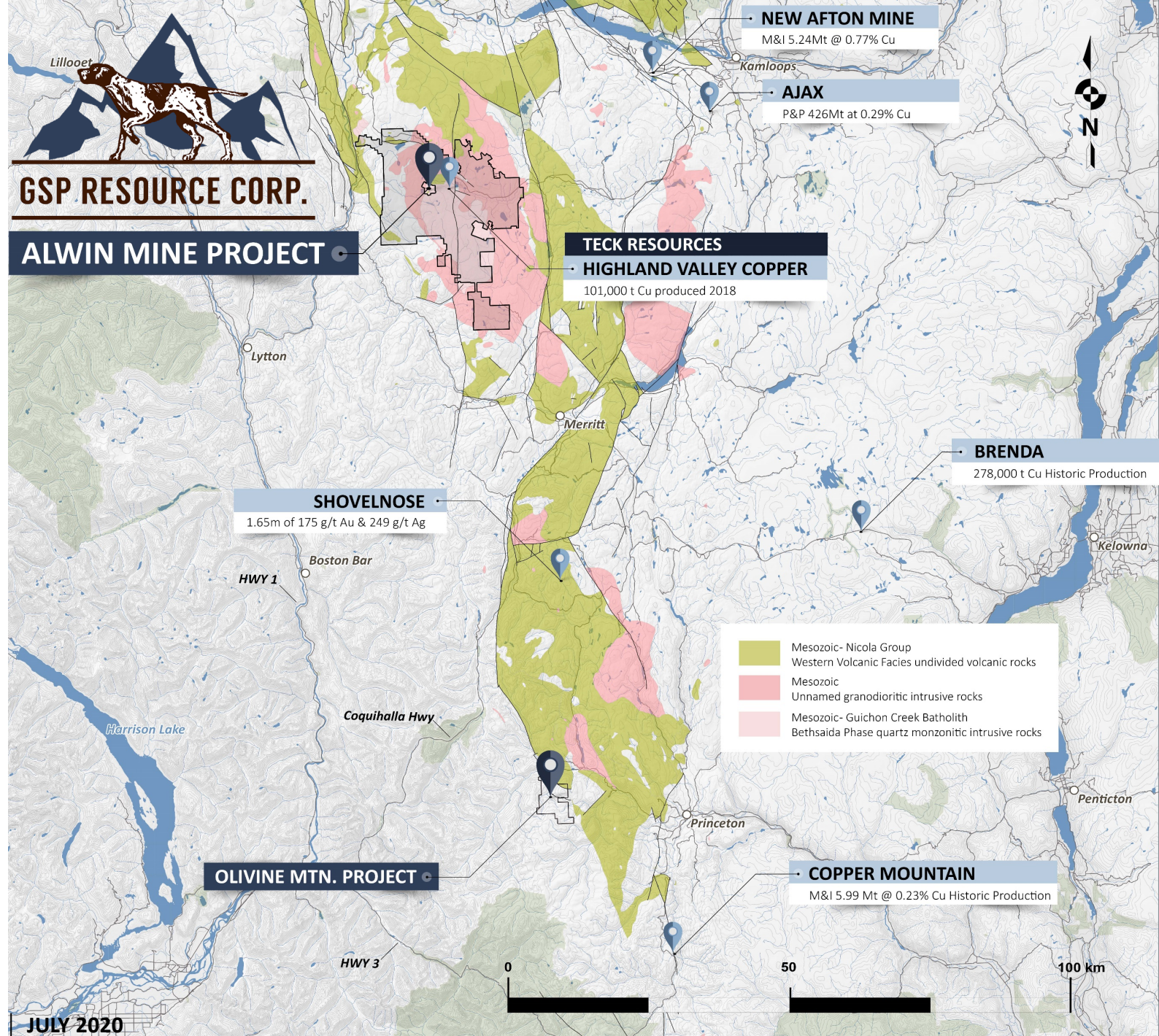
GSP RESOURCE CORP.

ALWIN MINE PROJECT

575 Hectare Project includes Past Producing Copper-Gold Silver Mine adjacent to the Valley Pit (Highland Valley Mine) Logan Lake, British Columbia

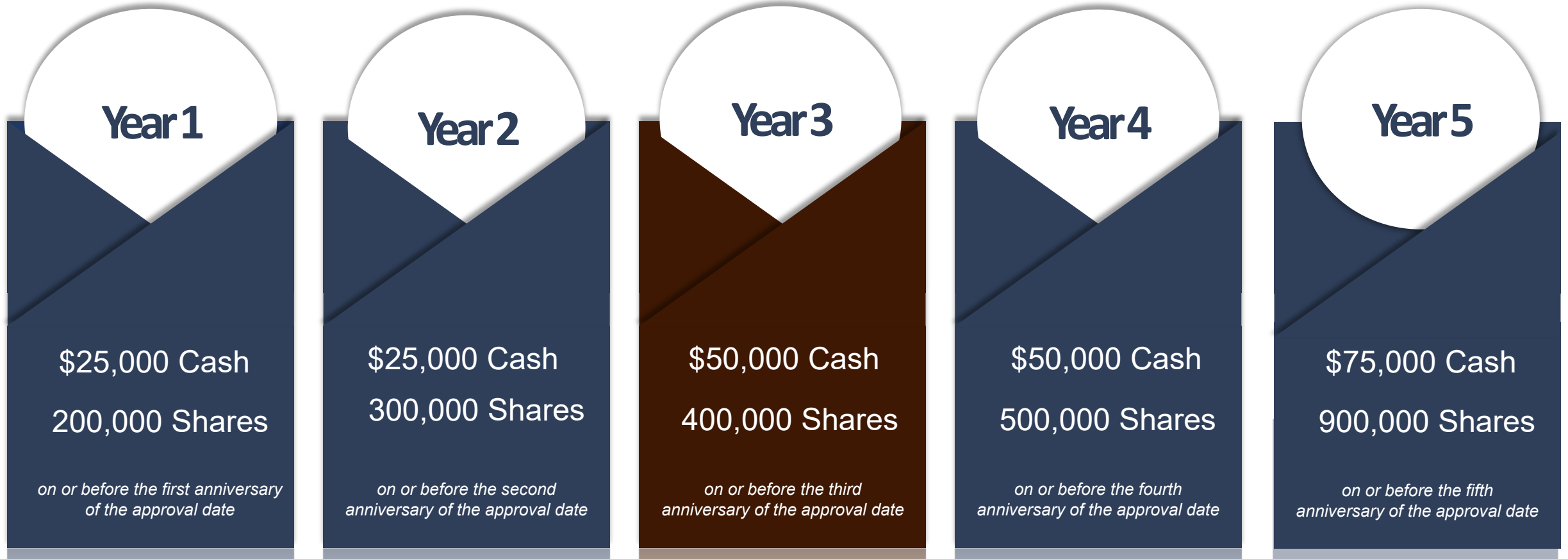
Alwin Mine Highlights:

- Brownfield project (past-producer) located adjacent to large, active open-pit mining operation (Teck Resources Highland Valley Copper)
- Located in mining friendly region of Southwestern British Columbia
- GSPR has obtained historical data from previous operators and is consolidating and reinterpreting this data to support a Summer-Fall 2020 Drill program



ALWIN MINE PROJECT - TERMS OF OPTION AGREEMENT

\$25,000 and 200,000 upon receipt of TSX Venture Exchange approval of the option agreement (paid);



Two million on or before the earlier of a bankable feasibility study and the eighth anniversary of the approval date.

Gross smelter returns royalty:

1.8% GSR royalty to the vendors with GSP's option to repurchase 0.8% GSR royalty for \$1.5-million, leaving the vendors with a 1% GSR royalty

ALWIN MINE COPPER-GOLD-SILVER PROJECT OVERVIEW / HISTORY

The project is adjacent to the western boundary of Teck Corporation's Highland Valley Mine, the largest open-pit porphyry copper-molybdenum mine in western Canada. **Alteration and mineralization of the Highland Valley hydrothermal system extends westward from the Highland Valley mine onto the Alwin Mine Property.**

Copper mineralization has been known in the area now covered by the Alwin Mine Property since late in the 19th century. Small-scale mining was conducted in the property area during the early 20th century. Recent exploration and mining was conducted during two periods: from 1967 to 1982 and from 2005 to 2008.

From 1967 to 1970: 6,940 m of surface diamond drilling in 81 holes was drilled along the main Alwin mineralized trend, and 5,860 m of underground drilling in 119 holes was completed in 1,400 m of development workings in the Alwin Mine.

1980, Dekalb Mining Corp. expanded the capacity of the mill to 700 tons (636.4 tonnes) per day and resumed mining of the main Alwin mineralized trend. Total production was 155,000 tonnes grading 1.54% copper. Mining was suspended in 1981 due to low copper prices. At the conclusion of mining, a trackless development decline had been extended to a depth of 270 m below surface (to an elevation of 1,400 m a.s.l.) and 3,935 m of drilling had been completed in 76 underground holes. Dekalb calculated a resource around the mine workings after mining terminated. A summary of this historical resource estimate calculation was reported to be a total of 390,000 tonnes of mineralization grading an average of 2.5% copper after factoring for 25% dilution. No cut-off grade was reported.

This historic resource was not calculated to current specifications and standards, and it is not compliant with National Instrument 43-101. It can not be deemed to be a current resource and it can not be relied upon. As noted below, the Company is not considering the estimate as current and further drilling is needed in order to upgrade the historical resource estimate. Please see news release dated January 30, 2020 for more information.

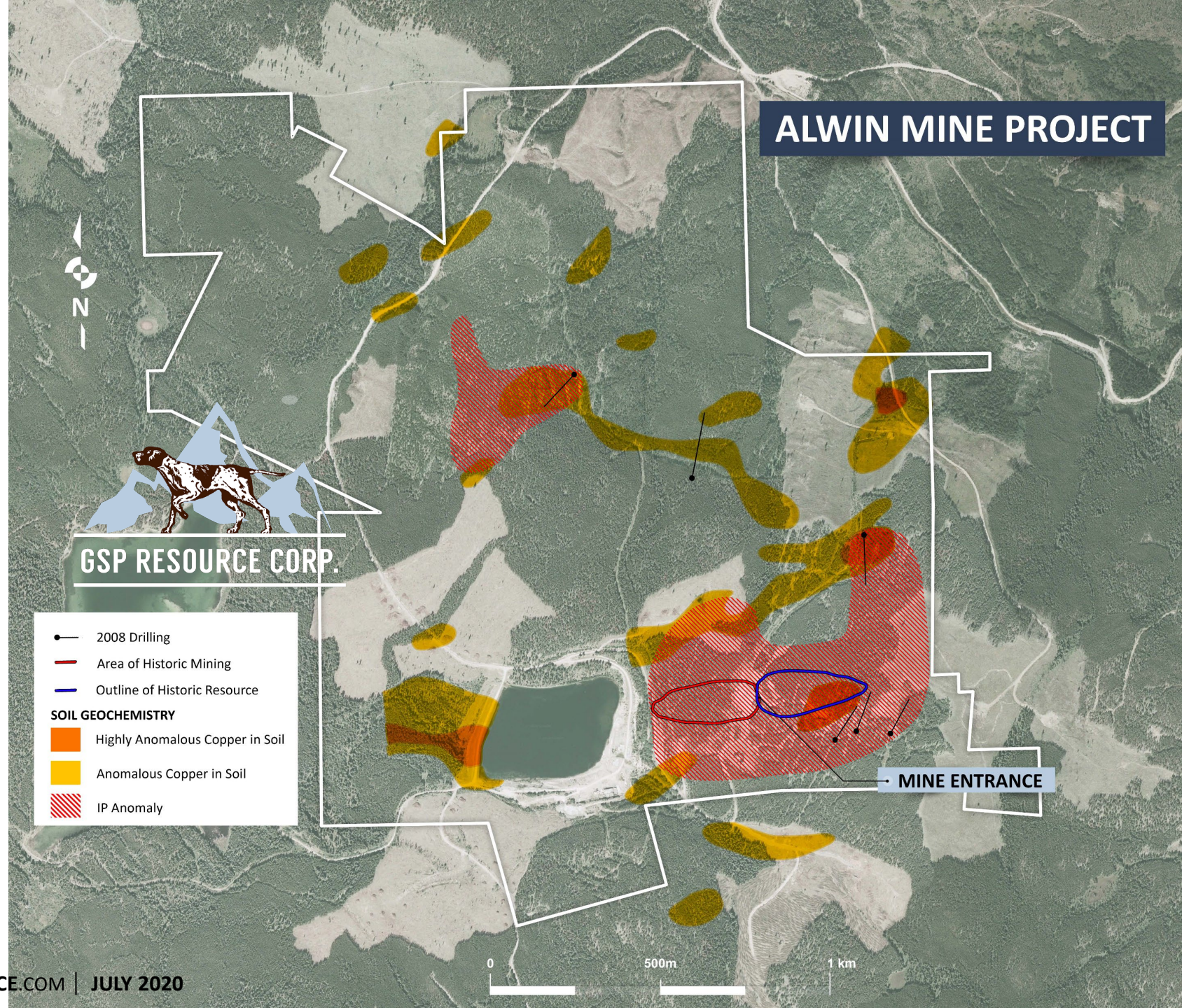


2008 DRILLING

From 2005 until 2008 San Marco Resources Inc. explored the Alwin Mine Property. Work included 3-dimensional induced polarization and soil surveys, and geological mapping that covered the whole property area. In 2008, San Marco Resources Inc. conducted 1,304.5 m of NQ diamond drilling in 8 holes.

The first five holes (DDH 1 to 4A) were drilled into the main mineralized trend near the eastern part of the mine workings. The last three holes (DDH 5 to 7) tested induced polarization anomalies north and northwest of the mine. See the accompanying table for significant drill intersections.

GSPR: Future work programs are expected to incorporate digitized and reinterpreted data from all previous operators.



ALWIN 2008 DRILLING

Drill Hole	Intersect (m)	Length (m)	Copper %	Molybdenum %	Gold gm/mt	
DDH 08-01	67.5-69	1.5	0.151	0.009	0.003	
	87.5-88.5	1	0.129	0.003	0.041	
	89.5-90.5	1	0.117	trace	0.004	
DDH 08-02 <i>includes</i>	20.8-21.2	0.5	8.453	0.47	0.092	
	23-24.5	1.5	0.288	0.047	0.018	
	27.3-27.5	0.2	10.53	0.055	0.039	
	79.5-83	3.5	0.121	0.223	0.023	
	116.5-118	1.5	0.204	0.006	0.002	
	129.3-133.3	4	0.371	0.0002	0.007	
	132.9-133.3	0.4	2.458	<i>0.0001</i>	<i>0.031</i>	
	140-141	1	0.246	0.0001	0.006	
	149-151	2	0.427	0.032	0.004	
155.8-159.2	3.7	0.438	0.0005	0.001		
DDH 08-03 <i>includes</i>	35.9-39.5	3.6	0.276	0.002	0.018	
	35.9-36.5	0.6	1.921	<i>0.002</i>	<i>0.022</i>	
	49.5-52.8	3.3	2.369	0.020	0.071	
	74-76.2	2.2	1.405	0.003	0.043	
	<i>includes</i>	75.5-76.2	0.7	3.787	<i>0.007</i>	<i>0.111</i>
		82.5-87.5	5	0.699	0.002	0.017
	102.5-104	1.5	0.688	0.172	0.008	
DDH 08-04A	17.5-19	1.5	0.455	0.0003	0.054	
	40-41	1	0.120	0.006	0.007	
	92-93.5	1.5	0.199	0.0014	0.001	
	111.5-113	1.5	0.180	0.002	Trace	
	114-115	1	0.806	0.0009	0.004	
	117-130.5	13.5	1.857	0.005	0.383	
	<i>includes</i>	124.3-125.2	0.9	4.108	<i>0.012</i>	<i>0.944</i>
	<i>and</i>	127.5-130.5	3	6.222	<i>0.009</i>	1.454



DDH 08-05	153.5-155				
	187.5-189	1.5	0.119	0.0002	0.001
	194.9-196.5	1.6	1.312	0.022	0.014
	196.8-197.5	0.7	1.542	0.0002	0.029
	204-205	1	0.196	0.0003	0.001
DDH 08-06 <i>includes</i>	211-216	5	0.109	0.0006	0.003
	183-184	1	0.595	0.002	0.007
	207.8-217.5	9.7	0.627	0.002	0.003
	210-211.2	1.2	2.205	<i>0.012</i>	<i>0.007</i>
	220-221.5	1.5	0.130	0.0004	Trace

SATELLITE IMAGES SHOWING EXPANSION TREND OF HVC

2005

HIGHLAND VALLEY COPPER MINE



ALWIN MINE PROJECT



2014

HIGHLAND VALLEY COPPER MINE

ALWIN MINE PROJECT






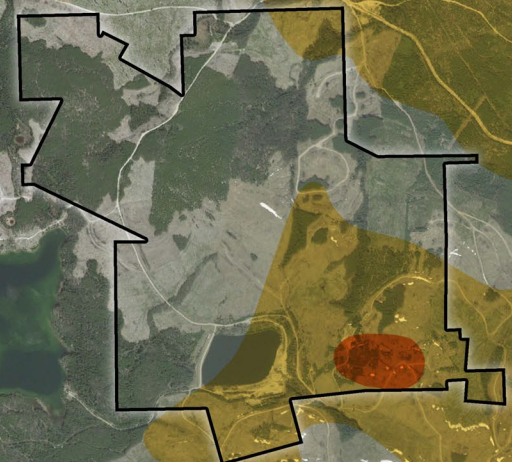
HISTORIC DISTRICT IP SURVEY



GSP RESOURCE CORP.

GEOPHYSICS

-  Strong IP Chargeability Contours
-  Moderate IP Chargeability Contours
-  Weak IP Chargeability Contours



TECK RESOURCES
HIGHLAND VALLEY COPPER
101,000 t Cu produced 2018



OLIVINE MOUNTAIN PROJECT

The 3020 Hectare property is located in the Interior Plateau area of South-Central British Columbia, 25 kilometers northwest of Princeton.

The Olivine Mountain property covers part of the Tulameen Ultramafic Complex, a large slab of magnesium and iron-rich rock that ascended from near the base of the earth's crust to its current position during continental collision and the emplacement of the Cache Creek terrane in southwestern British Columbia.

MAJOR PRODUCING MINE:

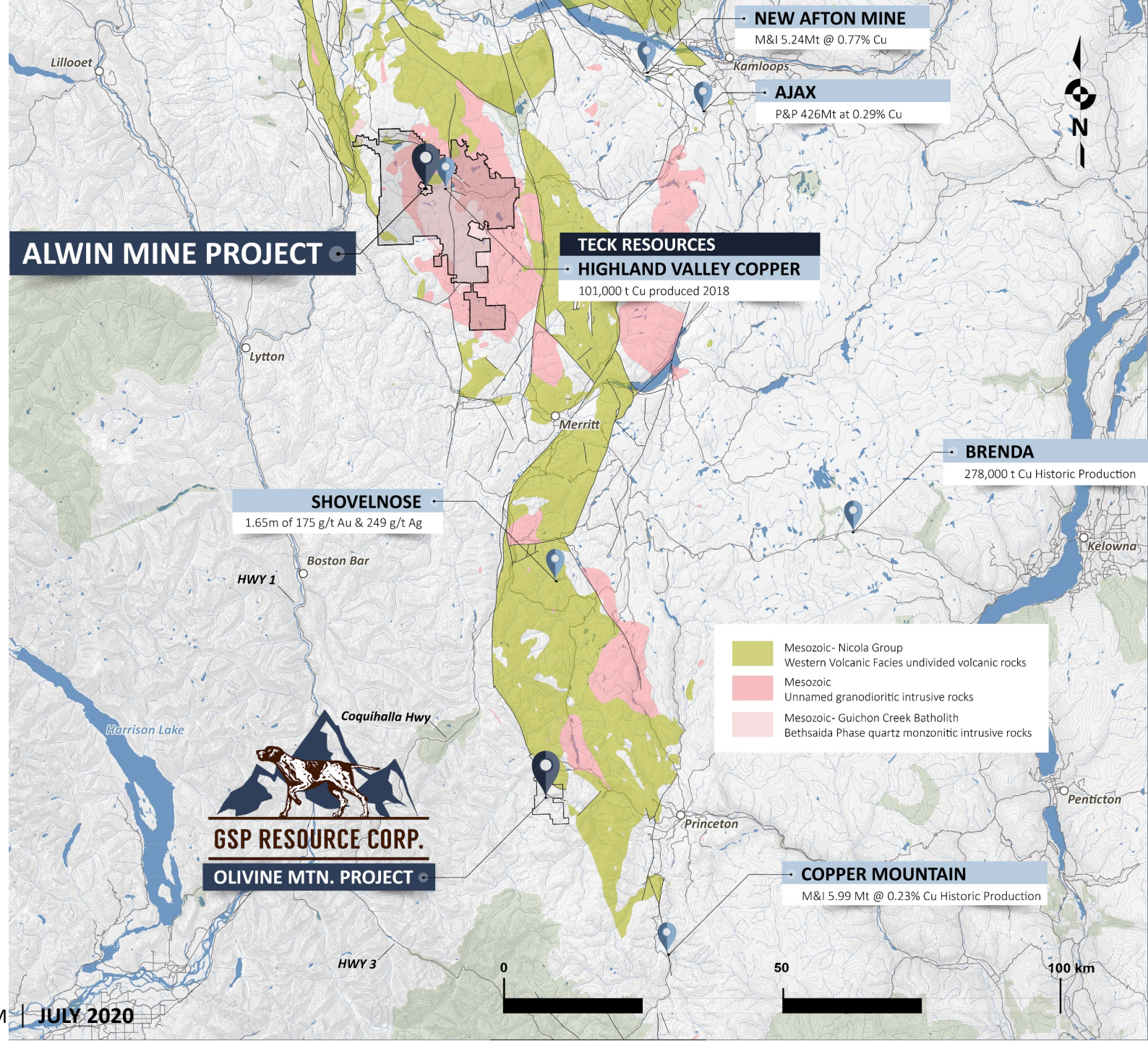
Olivine Mountain Project is ~25km Northwest of Copper Mountain Mine (TSX:CMC)

MAJOR RECENT DISCOVERY:

Olivine Mountain Project is ~50km Southeast of Westhaven Ventures (TSXV:WHN) Shovelnose Project

PAST PRODUCER:

Olivine Mountain Project is adjacent to Basin Coal Mine (Care & Maintenance)



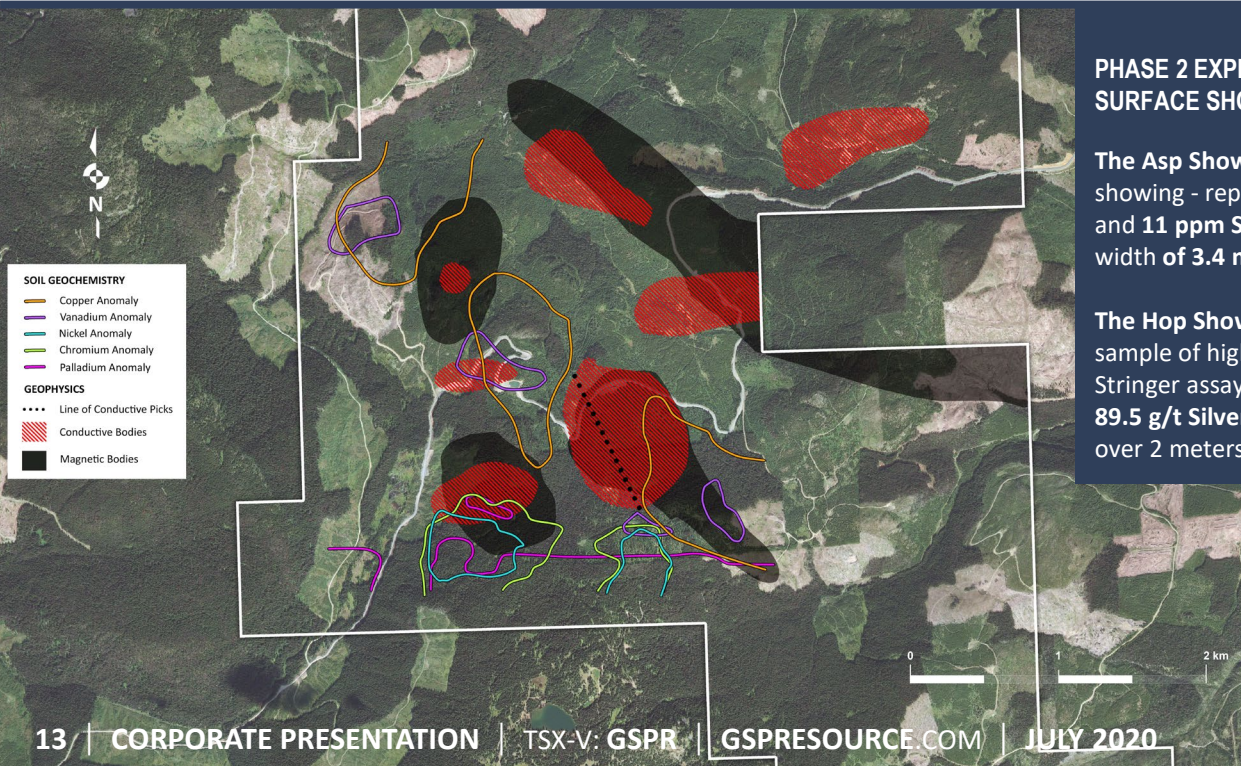
OLIVINE MOUNTAIN

ASP 14 showings Zone: The showings are above a series of old machine trenches that extend for more than 400 m down the hill side from the logging road to Olivine Creek. The largest and most intense soil-copper anomaly in the 2018 GSP grid area extends northeastward toward the trenches.

No modern exploration has been done in the area of the projected intersection of the soil anomaly and the trenches. It should be investigated.

Palladium Target Zone: There is an east-west trending structure that crosses the ultramafic-mafic rock boundary near the southeastern corner of the 2018 GSP Resource soil grid. That structure hosts the largest and most intense soil-palladium anomaly in the property area. Recommended work in that area includes extension of the soil grid, mapping, trenching, and drilling.

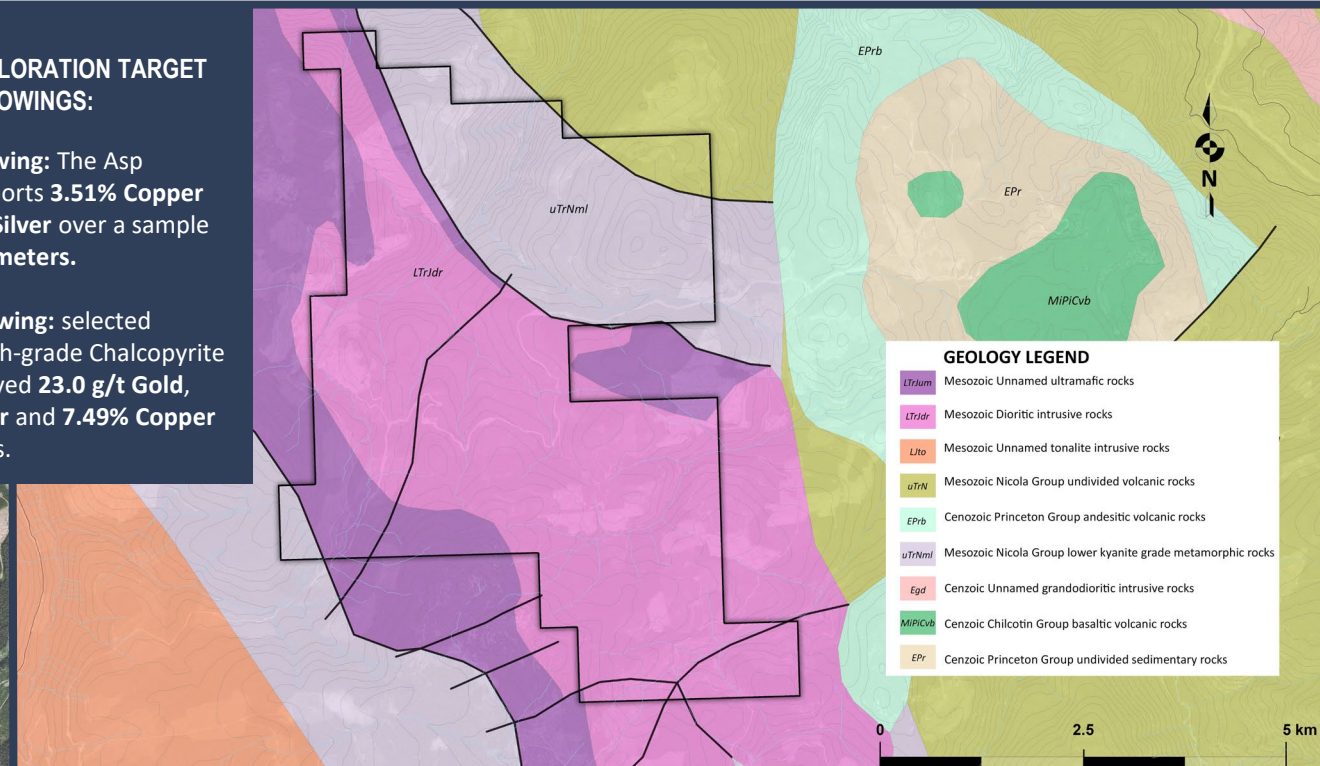
The HOP showings Zone: are a porphyry copper-molybdenum target, located in the southeastern part of the property area. Scant work has been conducted on them in the past. They may constitute the best exploration target on the property and should be investigated.



PHASE 2 EXPLORATION TARGET SURFACE SHOWINGS:

The Asp Showing: The Asp showing - reports **3.51% Copper** and **11 ppm Silver** over a sample width of **3.4 meters**.

The Hop Showing: selected sample of high-grade Chalcopyrite Stringer assayed **23.0 g/t Gold**, **89.5 g/t Silver** and **7.49% Copper** over 2 meters.



CAPITAL STRUCTURE

Issued & Outstanding Shares:	14.7 million
Fully Diluted:	18.7 million
Working Capital:	CAD \$500,000
Market Capitalization:	CAD \$5.0 million
Enterprise Value:	CAD \$4.5 million

Share Structure Detail

Notes:

Basic Shares	14,739,045	
Broker Warrants	289,415	20c strike price
Options	1,050,000	20c strike price
Warrants	1,120,000	20c strike, expiry November 4, 2021
Warrants	1,445,899	20c strike, expiry May 22, 2022
Fully Diluted	18,719,359	As at July 7, 2020

***All pre-IPO shares are subject to 36-month escrow release schedule;**

- 1.650 million non-insider pre-IPO shares remain escrowed;
- Management & Insiders Hold ~30.0% of I/O Shares (4.2 million)
- Free Float: **6.3 million shares** (as at July 7, 2020);



As of July 7, 2020



MANAGEMENT, DIRECTORS, ADVISORS

Simon C. Dyakowski CFA, MBA *President & CEO, Director*

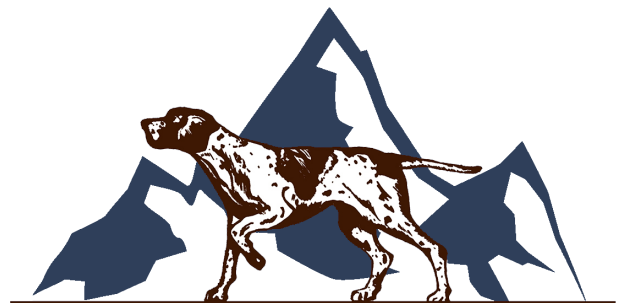
Mr. Dyakowski is President & CEO of GSP Resource Corp. He has over ten years of corporate finance, corporate development, and capital markets advisory experience. He holds an MBA - Finance from the University of British Columbia, is a CFA charterholder, and holds an undergraduate Finance degree from the University of Western Ontario. His recent focus is advising venture stage and growth-oriented public market issuers on deal structuring, capital markets, and corporate development strategies. His professional experience is rooted in equity research and equity sales coverage roles he held at Salman Partners and Leede Financial. His coverage universe included publicly held companies in the Mining, Energy, Forest Products, Heavy Industrial, and special situations sectors.

Christopher I. Dyakowski BSc, P.Geo. *Chairman, Director*

Mr. Dyakowski has over 35 years of mineral exploration experience. His background includes Board of Director and executive-level positions with numerous publicly traded junior mining companies. In these roles, Mr. Dyakowski has secured venture capital from individual sources and public financings; reviewed and supervised exploration programs; worked with regulators, government departments, legal and financial teams, the media and investors; and, located and secured mining properties in Canada, the United States, Argentina and Bolivia. Mr. Dyakowski is a member of the British Columbia Association of Professional Engineers and Geoscientists (P.Geo) and holds a B.Sc. (Geology) from the University of British Columbia.

Kenneth C. Phillippe CA *CFO*

Mr. Phillippe is a Chartered Professional Accountant and has over 35 years of public company experience. He obtained a Bachelor of Commerce Degree from the University of British Columbia in 1976. He articulated with Thorne Riddell (now KPMG) and obtained his professional accounting designation in 1981. Mr. Phillippe established his own accounting practice in 1981. Mr. Phillippe has served as an officer and director of public reporting issuers in both Canada and the United States



GSP RESOURCE CORP.

MANAGEMENT, DIRECTORS, ADVISORS

Jordan P. Trimble SCc, CFA

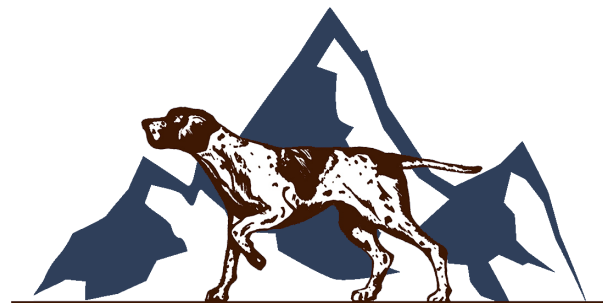
Director

Mr. Trimble is the President and Chief Executive Officer of Skyharbour Resources. Mr. Trimble holds a Bachelor of Science Degree with a Minor in Commerce from UBC and he is a CFA charterholder and serves as a director of the CFA Society Vancouver. He has worked in the resource industry in various roles with numerous TSX Venture listed companies specializing in corporate finance and strategy, shareholder communications, marketing, deal structuring and capital raising. Previous to Skyharbour, he managed the Corporate Development for Bayfield Ventures, a gold company with projects in Ontario which was acquired by New Gold (TSX: NGD). Mr. Trimble has an extensive network of institutional and retail investors as well as resource industry professionals bringing valuable relationships to the Company.

Justin G. Kates J.D

Director

Mr. Kates is a lawyer and partner of DuMoulin Black LLP (where he has worked for the past 6 years), practicing primarily in the areas of securities, corporate finance, mergers and acquisitions, and corporate and commercial law. Mr. Kates works with clients in a wide range of industries including oil and gas, technology, life sciences, food & beverage, and natural resources. He received his J.D. from the University of Western Ontario and his Bachelor of Business Administration from Western Michigan University.



GSP RESOURCE CORP.

J. Greg Dawson MSc, P.Geo

Senior Technical Advisor

Mr. Dawson has over 30 years of experience in the mineral exploration industry and is currently working as an independent consultant and sits on the board of Sitka Gold Corp. He holds a BSc in geology from the University of British Columbia and an MSc from Queens University and is a registered Professional Geoscientist with EGBC. His work experience includes acting as Vice President Exploration for Colorado Resources, President and Vice President, Exploration of Copper Ridge Explorations and serving as District Manager and General Manager with Teck Exploration Ltd. in Central Asia and South America. He also spent several years earlier in his career working for the Hunter Dickinson Group and its associated companies.

RECENT MILESTONES, UPCOMING CATALYSTS & SHAREHOLDER VALUE CREATION STRATEGY

PROJECTS

- Recently acquired option to acquire 100% of Alwin Mine Project; option to earn 100% of the Olivine Mountain project
- Recently negotiated deal to partner on Olivine Mountain Project with Full Metal Minerals (TSXV:FMM)

STRUCTURE

- Focus on capital efficiency and risk mitigation;
 - Capital Efficiency: carefully managing capital structure;
 - Focus on projects that can add near-term value to shareholders
 - Analyze potential acquisition on a Risk/Reward basis:
 - Opportunistic acquisitions
 - Target projects at appropriate stage for Public Exploration Vehicle, minimize dilution to existing shareholders

MACRO TRENDS

Metals & Mining Capital Markets Improving

- Early Recovery: Base metals tend to benefit in re-stocking rally coming out of economic recession;
- Precious metals historically outperform as USD weakens after Financial Crisis as fiscal and monetary stimulus effects are priced into market; during early recovery Metals perform well as currencies are debased to spur demand

H1 2020

- **Alwin:** Completed Definitive Agreement to Acquire - **COMPLETED**
- **Alwin:** Commenced Permitting for Summer Drill Program - **COMPLETED**
- **Alwin:** Data Analysis and 3D modelling of resource and projection of mineralization - **ONGOING**

Spring/Summer 2020

- **Alwin:** Incorporate study of historical drilling and resource into a new geological model to determine 2020 drill targets – **ONGOING**

Summer/Fall 2020

- **Alwin:** Commence Drill program testing historic high-grade Copper resource in addition to porphyry targets north of Alwin Mine Main Zone
- **Olivine:** Potential Partner-Funded Exploration of ASP 14, South Palladium, and HOP Showings

Ongoing:

Continually evaluate new opportunities to add shareholder value through Acquisition & Development of projects (Southwestern BC focus)

Social & Environmental Responsibility

Creating jobs for British Columbia based crews,
Adding Value in BC's Interior



Simon Dyakowski, CFA, MBA
President & CEO, Director

Mobile: +1-604-619-7469
Email: simon@gspresource.com

#1610 - 777 Dunsmuir Street
Vancouver, BC V7Y 1K4

